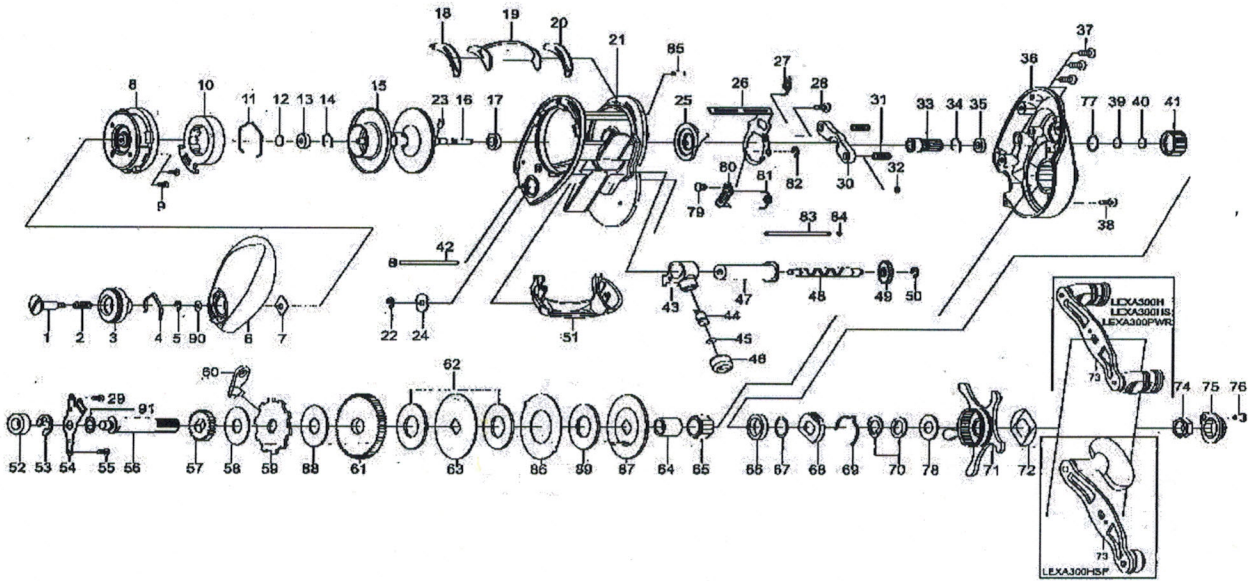


Please order by parts number, not key number
 Veuillez indiquer le numéro de la pièce (Non "Key" No.)

DAWA
 BAITCASTING REEL

LEXA 300H/300HS/300HS-P/300PWR



KEY NO.	PART NO.	PART NAME
1	460-5570	SET PLATE SCREW
2	510-4450	SET PLATE SPRING
3	550-1611	BRAKE ADJUST KNOB
4	510-5180	BRAKE CLICK SPRING
5	200-0530	BRAKE DIAL RETAINER(A)
6	230-2350	LEFT SIDE PLATE
7	410-1911	BRAKE DIAL RETAINER(B)
8	230-2360	SET PLT
9	460-3220	SCREW
10	240-1952	MAGNET HOLDER
11	430-1070	MAGNET HOLDER RET. RING
12	540-5990	SPACER(A)
13	140-1500	BALL BEARING(A)
14	430-1061	BEARING RETAINER
15-17	700-9510	SPOOL ASSEMBLY
18	410-1970	SPACER(B)
19	090-0280	CLUTCH LEVER
20	410-1960	SPACER(C)
21	110-1030	FRAME ASSEMBLY
22	200-0530	WORM SHAFT RETAINER
23	400-2250	SPOOL PIN
24	540-6060	WORM SHAFT WASHER
25	170-1261	CLUTCH CAM
26	410-2610	CLUTCH CAM PLT
27	510-5160	SPRING
28	460-1290	SCREW
29	460-5370	SEREW
30	410-1890	YOKE
31	510-5190	YOKE SPRING
32	540-6020	WASHER
33	260-1730	PINION GEAR
34	430-1061	BEARING RETAINER
35	150-2060	BUSH
36	230-2340	RIGHT SIDE PLATE
37	460-7010	SCREW
38	460-5600	SCREW
39	540-6850	SPACER(D)
40	540-4340	SPACER(E)
41	380-1661	CAST CONTROL CAP
42	460-4980	LONG SCREW
43	490-1080	LINE GUIDE
44	400-2540	LINE GUIDE PAWL
45	540-3980	WASHER(C)
46	380-0780	LINE PAWL CAP
47	270-0810	LEVEL WIND GUARD
48	470-1960	WORM SHAFT
49	240-2210	WORM SHAFT GEAR
50	200-0530	GEAR RETAINER
51	550-1630	FRAME PLATE
52	140-1280	BALL BEARING
53	200-0580	DRIVE GEAR SHAFT RETAINER(B)
54	410-2540	DRIVE SHAFT RETAINER
55	460-5290	SCREW
56	470-1950	DRIVE SHAFT

KEY NO.	PART NO.	PART NAME
57	240-2200	DRIVE SHAFT GEAR
58	540-7010	DRIVE SHAFT WASHER B
59	240-2550	ANTI-REVERSE RATCHET
60	530-0860	ANTI-REVERSE PAWL
61	250-1340	DRIVE GEAR
62	540-6890	DRAG WASHER
63	540-8010	KEY WASHER
64	150-2200	GEAR SHAFT COLLAR
65	140-1370	ROLLER CLUTCH
66	140-0570	BALL BEARING
67	540-1570	SPACING WASHER
68	410-2220	CLICK LEAF SPRING HOLDER
69	510-4760	LEAF SPRING(A)
70	540-6390	DRAG SPRING WASHER
71	700-7170	STAR DRAG
72	510-3260	LEAF SPRING(B)
73	700-8440	HANDLE ASSEMBLY
74	380-0770	HANDLE NUT
75	180-2471	HANDLE NUT PLATE
76	460-0440	SCREW
77	430-1080	D-RING
78	540-9020	WASHER(D)
79	400-3310	KICK LEVWE PIN
80	330-2840	KICK LEVER
81	510-5130	KICK LEVER SPRING
82	200-0570	E-CLIP
83	400-2660	PILLAR
84	200-1160	E-CLIP
85	400-2570	PIN
86	540-8030	EARED WASHER
87	540-8020	TOP WASHER
88	540-7030	WASHER
89	540-8080	WASHER
90	540-5380	WASHER
91	540-6600	WASHER

LEXA 300HS SPECIAL PARTS		
KEY NO.	PART NO.	PART NAME
33	260-1740	PINION GEAR
36	230-2341	RIGHT SIDE PLATE
61	250-1350	DRIVE GEAR

LEXA 300HS-P SPECIAL PARTS		
KEY NO.	PART NO.	PART NAME
33	260-1741	PINION GEAR
36	230-2342	RIGHT SIDE PLATE
61	260-1350	DRIVE GEAR
73	700-8450	HANDLE ASSEMBLY

LEXA 300 PWR SPECIAL PARTS		
KEY NO.	PART NO.	PART NAME
33	260-1940	PINION GEAR
36	230-2343	RIGHT SIDE PLATE
61	250-1500	DRIVE GEAR