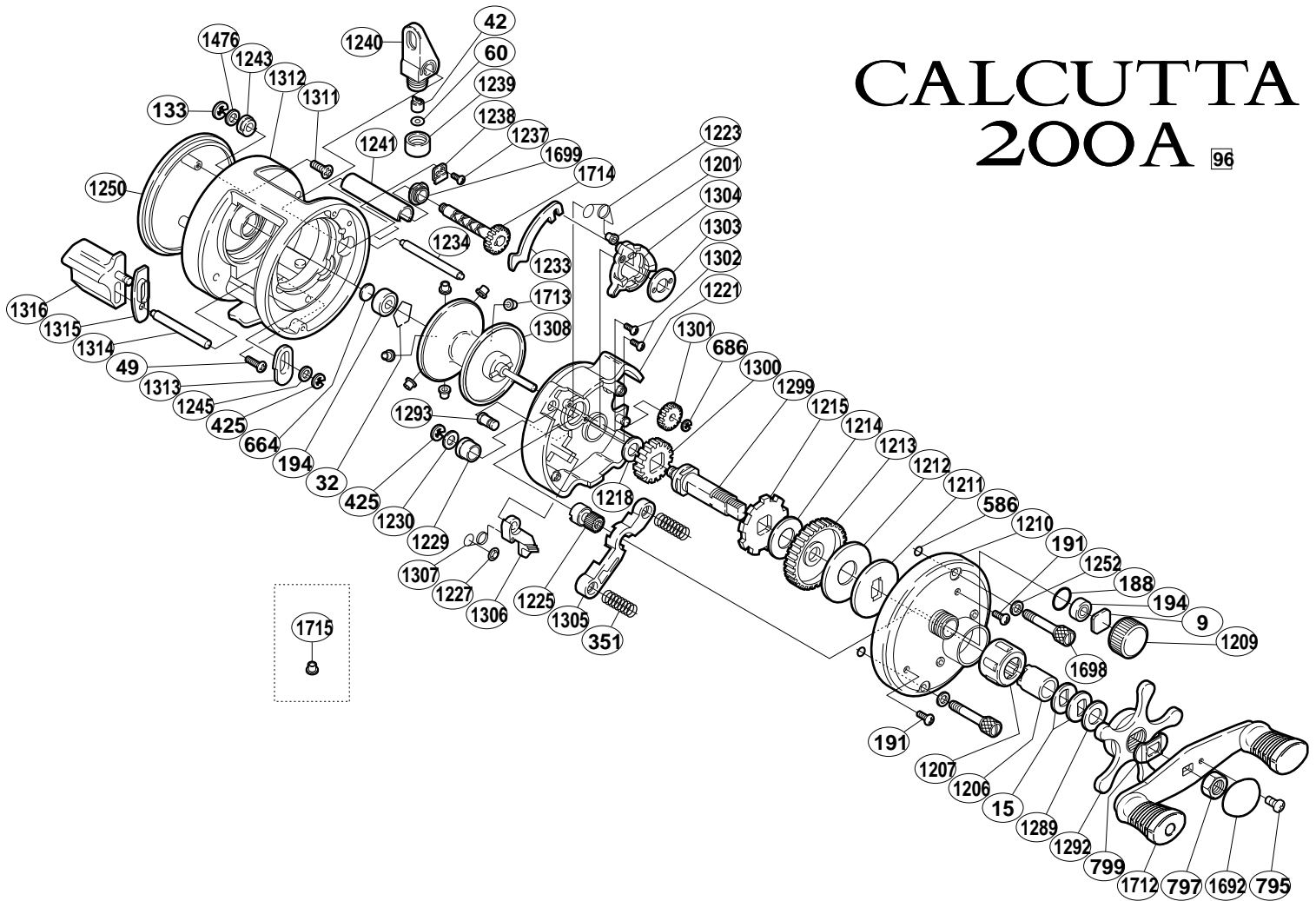


CALCUTTA 200A 96



1997-10-7

BNT No.	PARTS NAMES	BNT No.	PARTS NAMES	BNT No.	PARTS NAMES
0009	Cast Control Spacer	1214	Drag Washer (A)	1302	Clutch Cam Screw
0015	Drag Spring Washer	1215	Anti-Reverse Ratchet	1303	Clutch Cam Retainer
0032	Bearing Retainer	1218	Idle Gear (A) Spacer	1304	Clutch Cam
0042	Line Guide Pawl	1221	Set Plate	1305	Yoke
0049	Left Side Plate Screw	1223	Retractor Spring	1306	Clutch Pawl
0060	Spacer (optional)	1225	Pinion Gear	1307	Clutch Pawl Spring
0133	Worm Shaft Retainer	1227	Clutch Pawl Spring Retainer	1308	Spool Assembly
0188	"O" Ring	1229	Drive Shaft Bushing	1311	Left Side Plate Screw
0191	Right Side Plate Screw	1230	Drive Shaft Spacer	1312	One-Piece Frame
0194	Ball Bearing	1233	Clutch Plate	1313	Clutch Bar Guide (A)
0351	Yoke Spring	1234	Level Wind Guide	1314	Clutch Bar Support
0425	"E" Lock	1237	Worm Bushing (A) Retainer Screw	1315	Clutch Bar Guide (B)
0586	Bolt Retainer	1238	Worm Bushing (A) Retainer	1316	Quick-Fire II Clutch Bar
0664	Spacer (B)	1239	Pawl Cap	1476	Worm Shaft Spacer
0686	Idle Gear (B) Retainer	1240	Line Guide	1692	Handle Nut Plate
0795	Handle Nut Plate Screw	1241	Level Wind Guard	1698	Right Side Plate Bolt
0797	Handle Nut	1243	Worm Bushing (B)	1699	Worm Bushing (A)
0799	Friction Washer	1245	Clutch Bar Support Spacer	1712	Handle Assembly
1201	Retractor Spring Collar	1250	Left Side Plate	1713	Brake Collar (green)
1206	Roller Clutch Inner Tube	1252	Right Side Plate Bolt Washer	1714	Worm Shaft
1207	Roller Clutch Bearing	1289	Star Drag Spacer		
1209	Cast Control Cap	1292	Star Drag		
1210	Right Side Plate	1293	Retractor Spring Pin		
1211	Key Washer	1299	Drive Shaft		
1212	Drag Washer (C)	1300	Idle Gear (A)		
1213	Drive Gear	1301	Idle Gear (B)	1715	Brake Collar (red)